



Swift Imaging,  
Reliable Reading

**SwiftMR**<sup>TM</sup>

**AI-Powered MRI Reconstruction Solution**

**FONAR**

Authorized Distributor

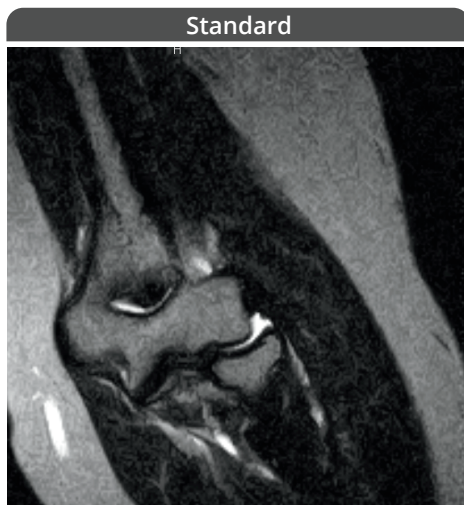
**SwiftMR™**, a product of AIRS Medical, uses AI-powered denoising and sharpening to enhance the quality of MRI images and enable the reduction of MRI scan times.

---

**Elbow  
T2 COR**

0.3T  
Hitachi  
Airis Elite

TR/TE: 4700/100 ms  
Acquisition voxel size:  
0.625×0.83×3.5 mm<sup>3</sup>



Scan Time 05:57



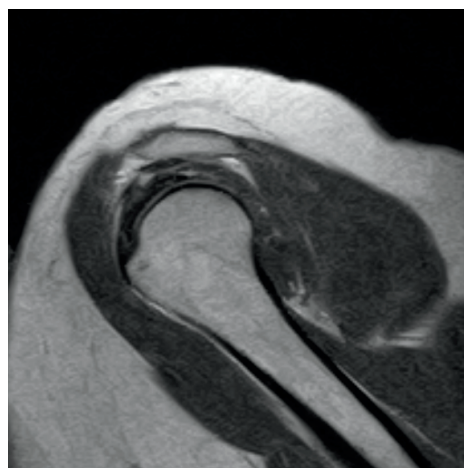
Scan Time 02:59

---

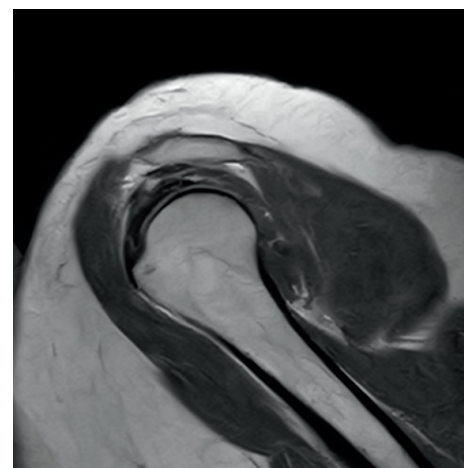
**Shoulder  
PD SAG**

0.3T  
Hitachi  
Airis Elite

TR/TE: 2676/40 ms  
Acquisition voxel size:  
0.70×1.125×4.0 mm<sup>3</sup>



Scan Time 03:56



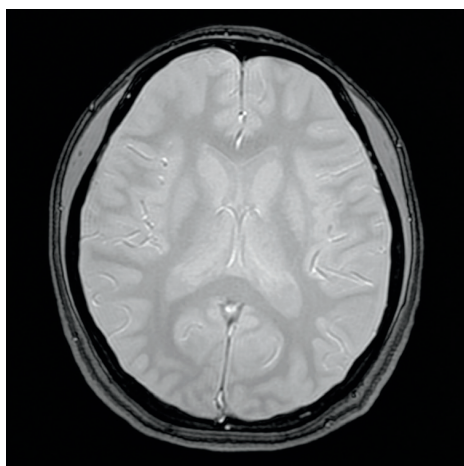
Scan Time 02:13

---

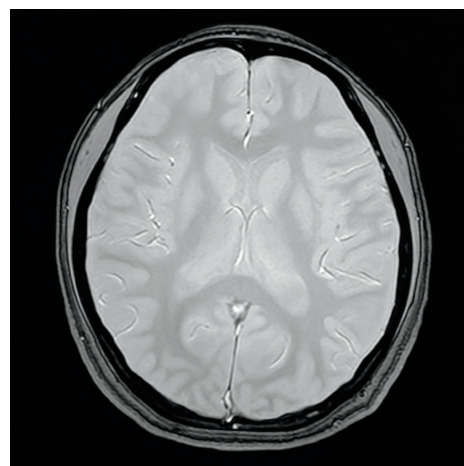
**Brain  
AX T2\***

1.5T  
GE  
Signa HDxt

TR/TE: 517/12 ms  
Acquisition voxel size:  
0.88×1.05×5.0 mm<sup>3</sup>



Scan Time 03:17



Scan Time 01:40

Standard



Scan Time 03:02

Faster scan enhanced by SwiftMR™

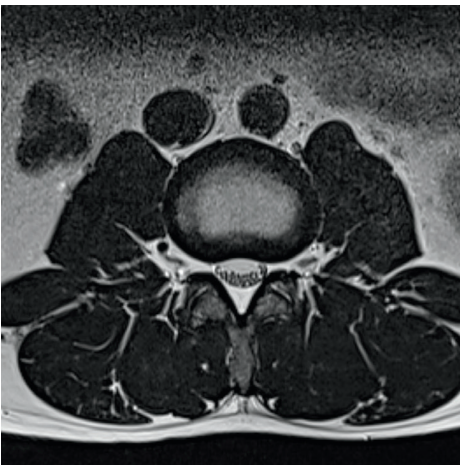


Scan Time 01:32

## L-Spine SAG T2

1.5T  
Siemens  
MAGNETOM Essenza

TR/TE: 3200/100 ms  
Acquisition voxel size:  
0.71×1.191×4.0 mm<sup>3</sup>



Scan Time 03:00

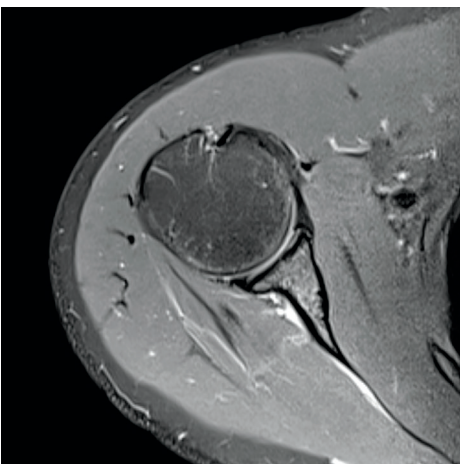


Scan Time 01:28

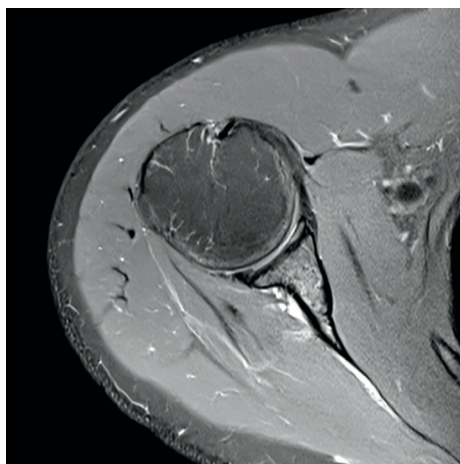
## L-Spine AX T2

1.5T  
Siemens  
MAGNETOM Essenza

TR/TE: 3540/98 ms  
Acquisition voxel size:  
0.56×0.75×4.0 mm<sup>3</sup>



Scan Time 02:51



Scan Time 01:27

## Shoulder AX PD FS

1.5T  
Siemens  
MAGNETOM Essenza

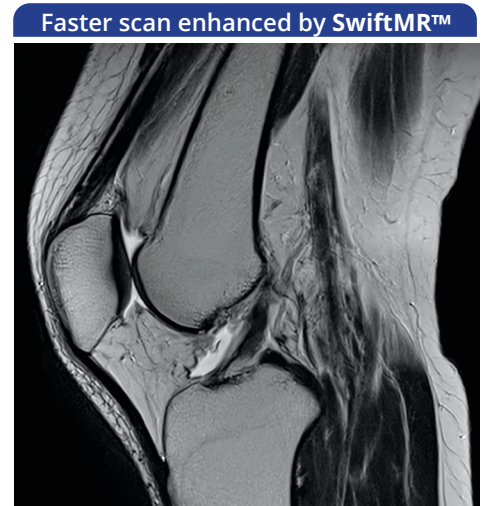
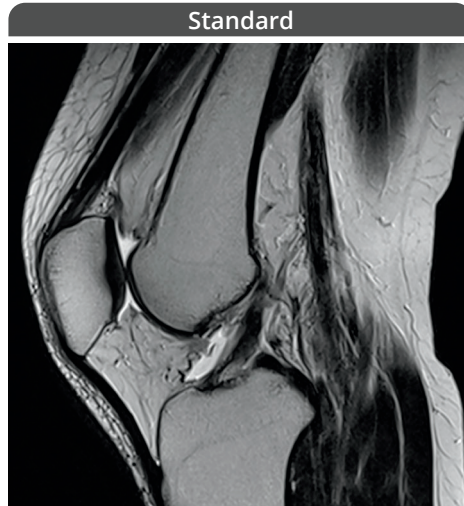
TR/TE: 3000/23 ms  
Acquisition voxel size:  
0.63×0.78×3.0 mm<sup>3</sup>

# Reliable image quality and reduced scan times

## Knee SAG T2

1.5T  
Siemens  
MAGNETOM Essenza

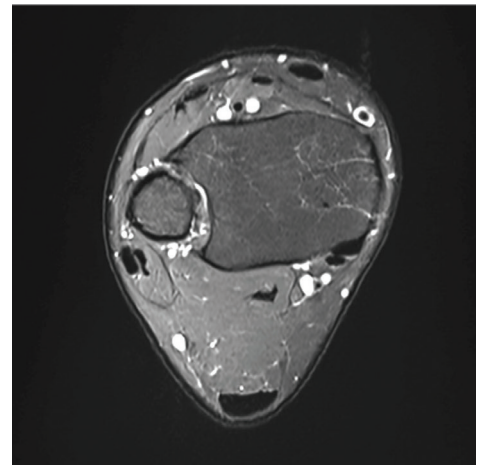
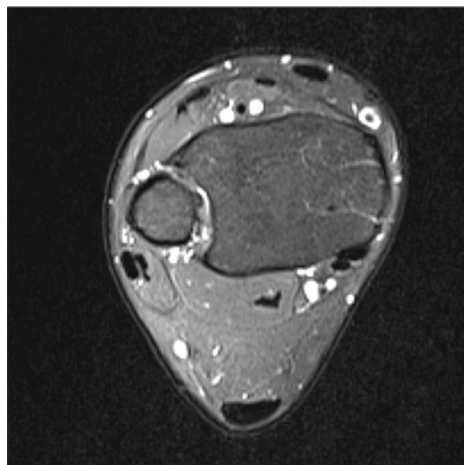
TR/TE: 4450/105 ms  
Acquisition voxel size:  
0.50×0.56×3.0 mm<sup>3</sup>



## Ankle AX PD FS

1.5T  
Siemens  
MAGNETOM Essenza

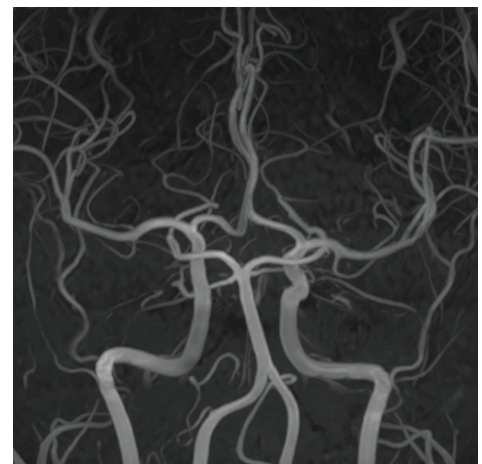
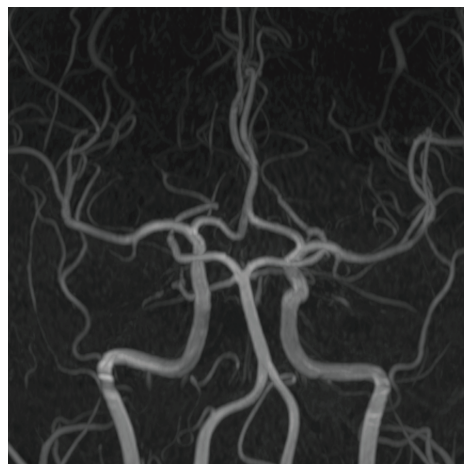
TR/TE: 3270/37 ms  
Acquisition voxel size:  
0.53×0.66×3.0 mm<sup>3</sup>



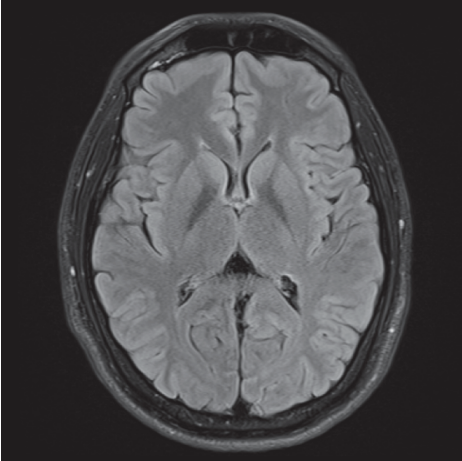
## Brain MRA

3.0T  
Siemens  
MAGNETOM Skyra

TR/TE: 21.0/3.4 ms  
Acquisition voxel size:  
0.52×0.55×1.2 mm<sup>3</sup>

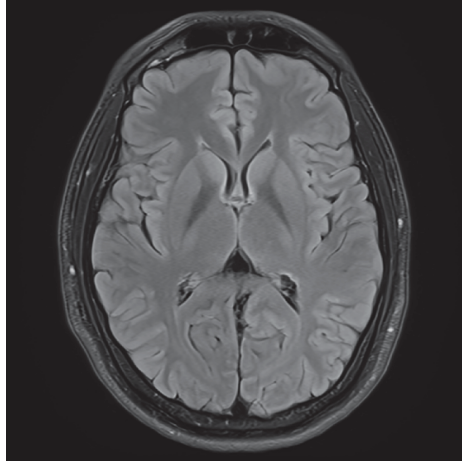


Standard



Scan Time 02:42

Faster scan enhanced by SwiftMR™



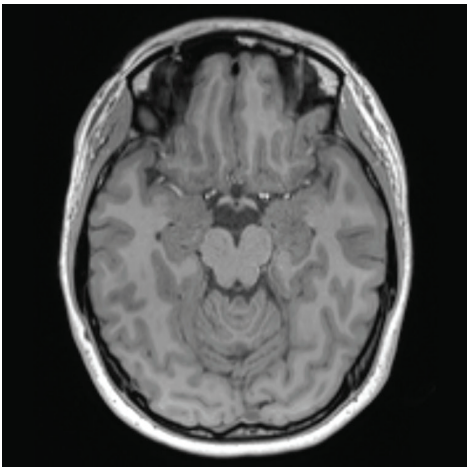
Scan Time 01:48

---

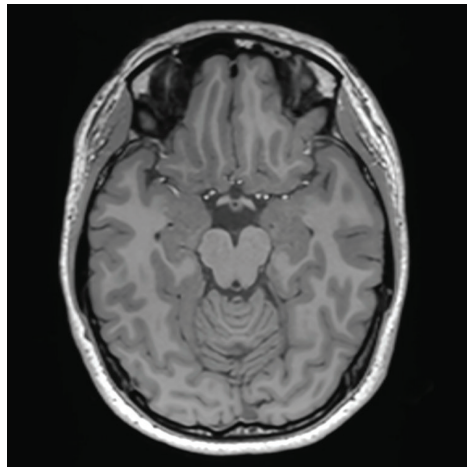
**Brain  
AX FLAIR FS**

3.0T  
Siemens  
MAGNETOM Skyra

TR/TE: 9000/102 ms  
Acquisition voxel size:  
0.55×0.91×5.0 mm<sup>3</sup>



Scan Time 04:51



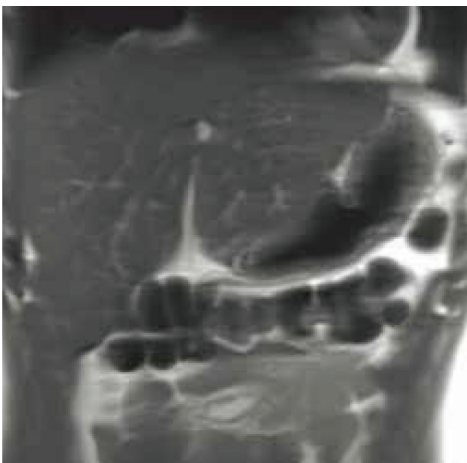
Scan Time 02:48

---

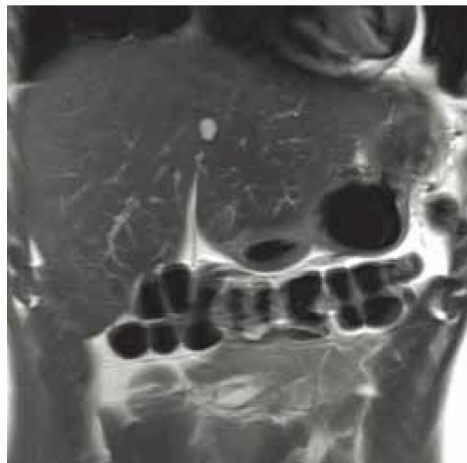
**Brain  
3D T1  
AX Reformat**

3.0T  
Siemens  
MAGNETOM Skyra

TR/TE: 2100/2.8 ms  
Acquisition voxel size:  
1 mm<sup>3</sup> isotropic  
Reformat thickness:  
1 mm



Scan Time 00:33  
2 breath-hold



Scan Time 00:17  
1 breath-hold

---

**Liver  
COR T2**

3.0T  
Siemens  
MAGNETOM Skyra

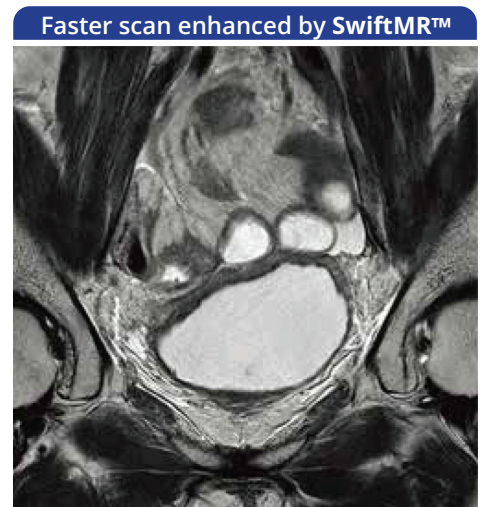
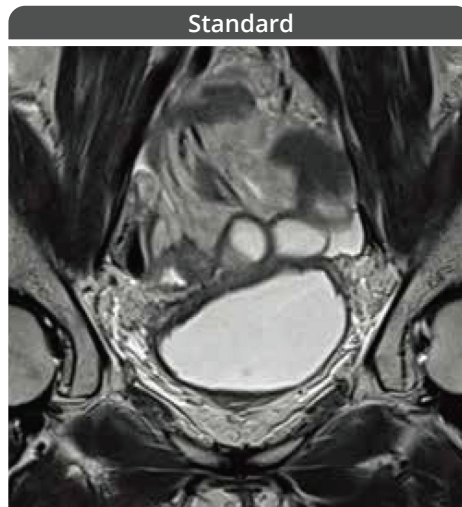
2D HASTE  
L 1.2×1.5×5.0 mm<sup>3</sup>  
R 1.0×1.2×5.0 mm<sup>3</sup>

# Reliable image quality and reduced scan times

## Bladder COR T2

3.0T  
Siemens  
MAGNETOM Skyra

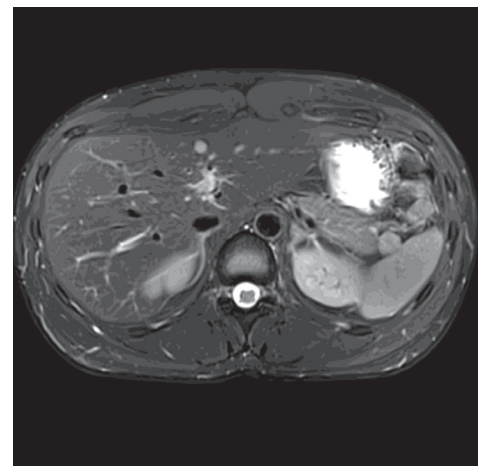
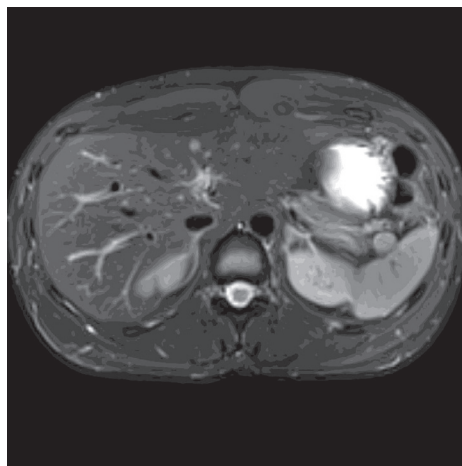
2D TSE  
L 0.6×0.9×3.0 mm<sup>3</sup>  
R 0.5×0.7×3.0 mm<sup>3</sup>



## Liver T2 FS

3.0T  
Siemens  
MAGNETOM Skyra

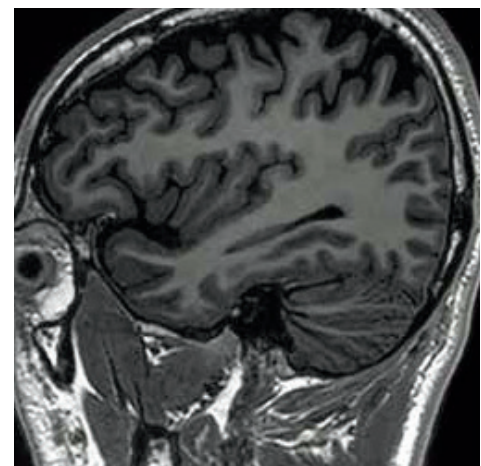
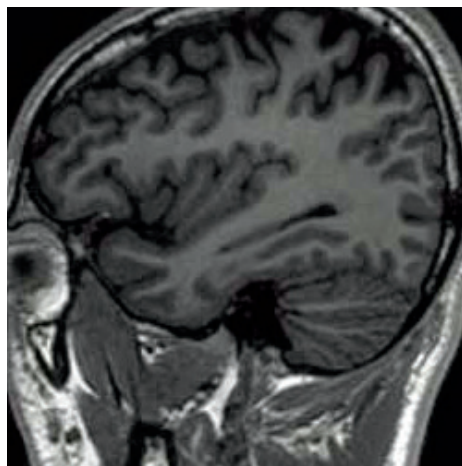
2D TSE-BLADE



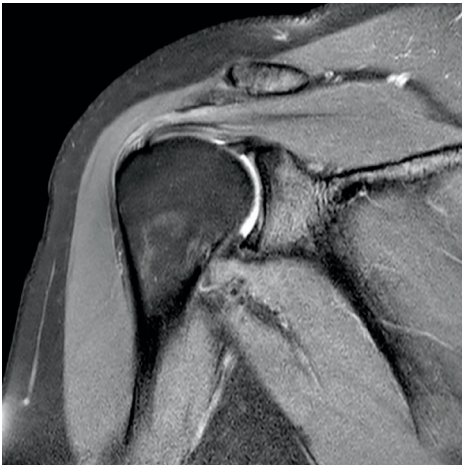
## Brain 3D SAG T1

3.0T  
GE  
DISCOVERY MR750w

3D BRAVO  
L 1.0×1.0×1.0 mm<sup>3</sup>  
R 1.0×1.0×1.0 mm<sup>3</sup>

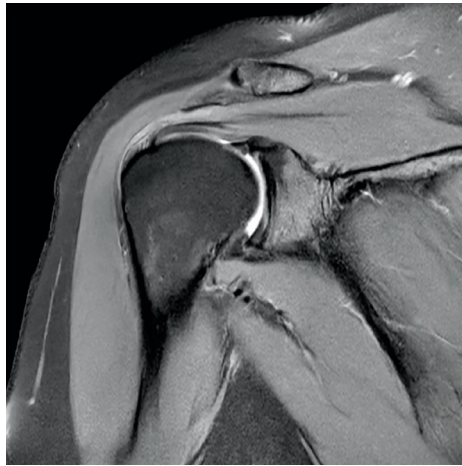


Standard



Scan Time 02:43

Faster scan enhanced by SwiftMR™



Scan Time 01:26

---

### Shoulder COR PD FS

3.0T  
Philips  
Ingenua CX

TR/TE: 2400/30 ms  
Acquisition voxel size:  
0.50×0.68×3.0 mm<sup>3</sup>



Scan Time 02:41



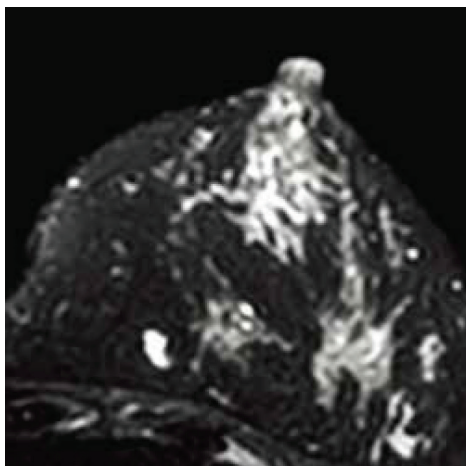
Scan Time 01:35

---

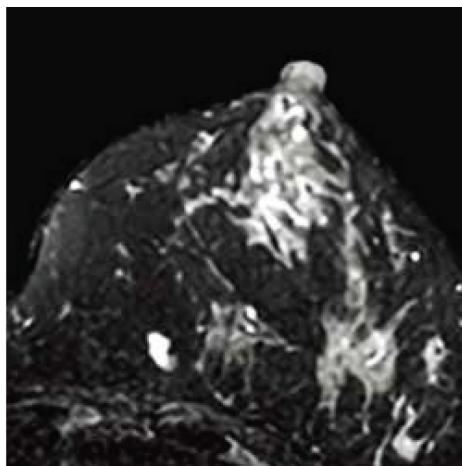
### Knee COR PD FS

3.0T  
Philips  
Ingenua CX

TR/TE: 3000/30 ms  
Acquisition voxel size:  
0.40×0.51×3.0 mm<sup>3</sup>



Scan Time 05:14



Scan Time 03:17

---

### Breast AX T2 FS

3.0T  
Philips  
Ingenua CX

2D TSE  
L 1.4×1.5×1.0 mm<sup>3</sup>  
R 1.2×1.3×1.0 mm<sup>3</sup>



**SwiftMR™ Sales:**

Email: [SwiftMRsales@fonar.com](mailto:SwiftMRsales@fonar.com)

Phone: +1.631.463.0205

or Text "SWIFT" to +1.347.548.8240

**FONAR**

Headquarters:

110 Marcus Drive

Melville, NY 11747, U.S.A.

Phone: +1.631.694.2929

